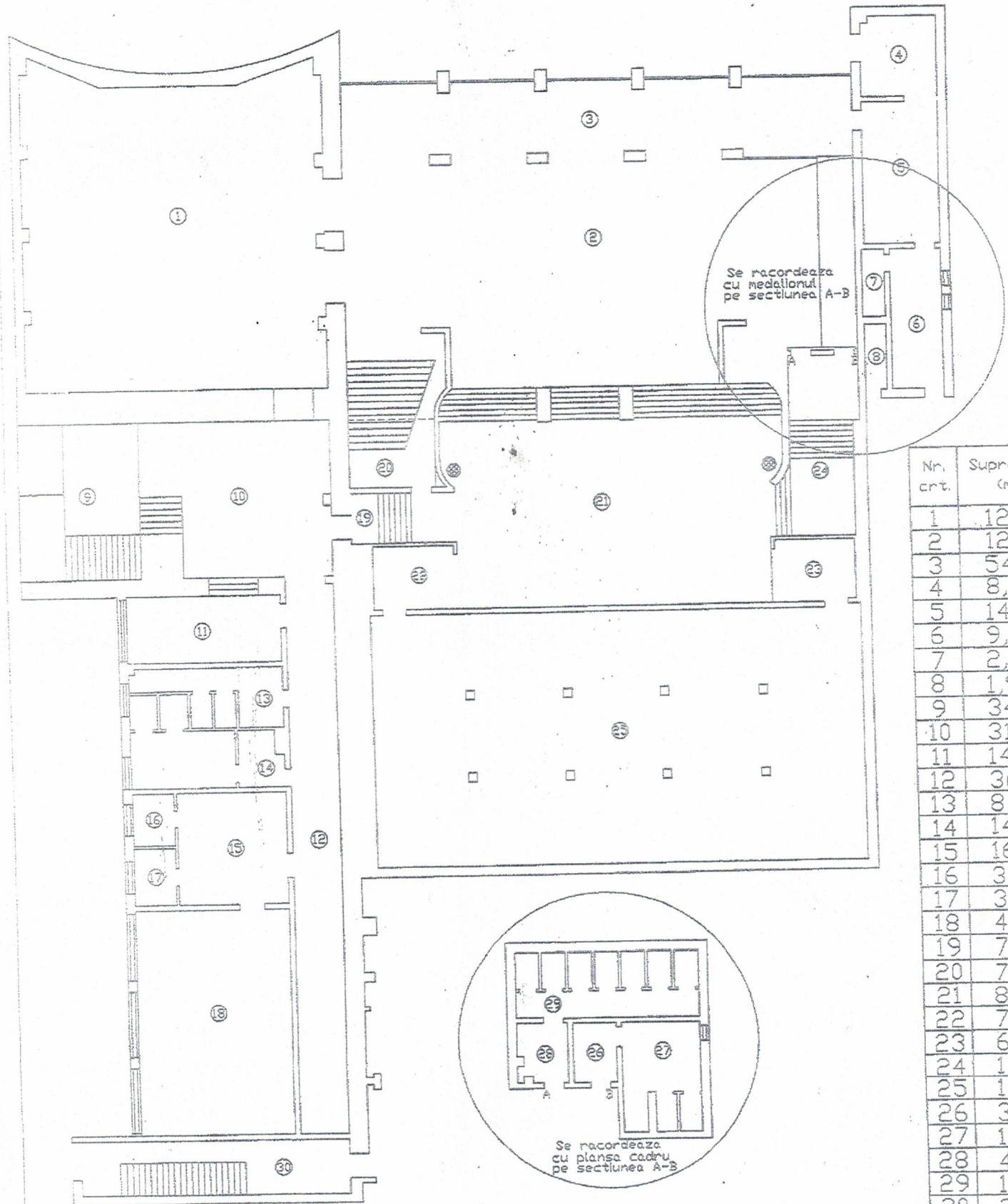


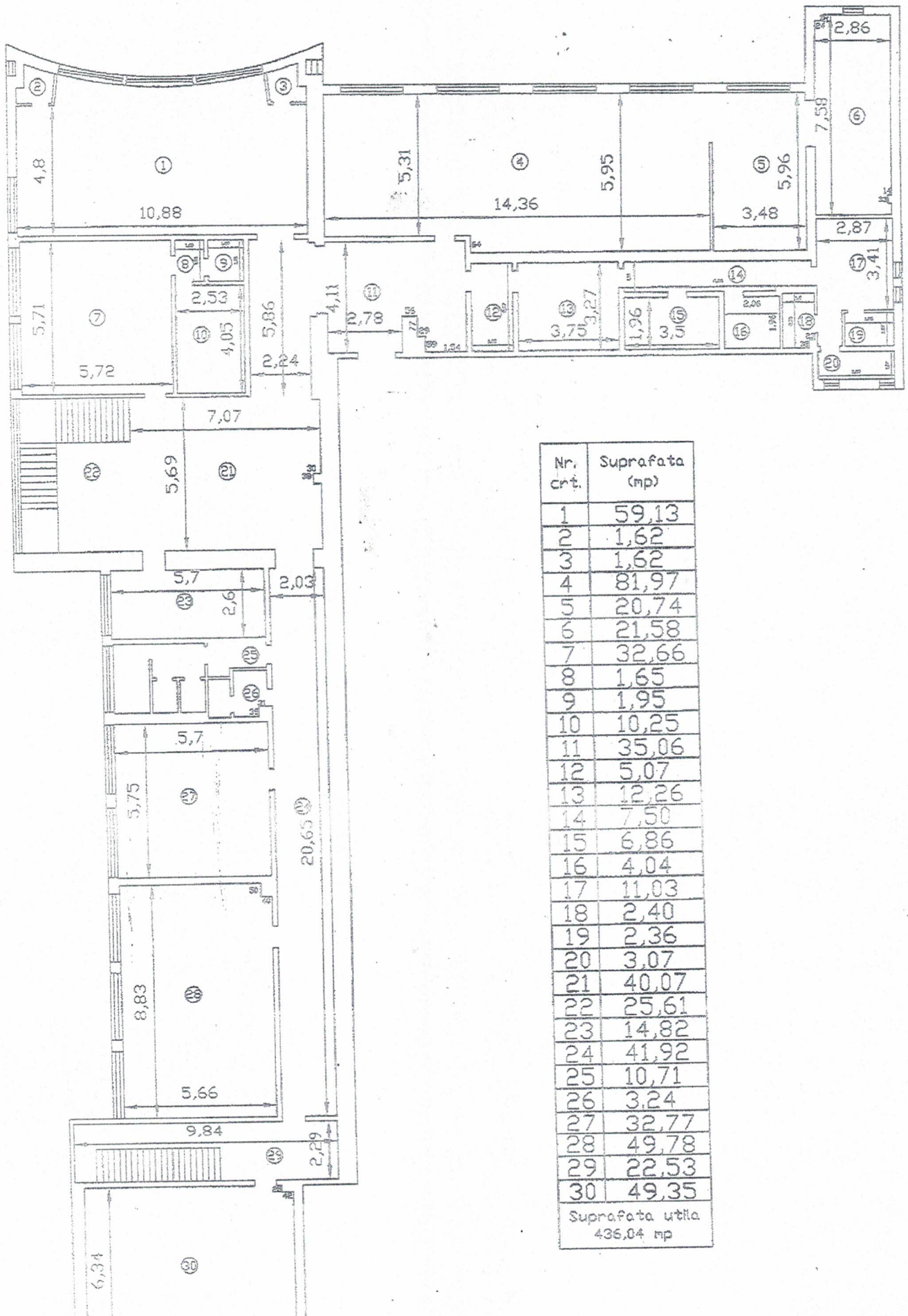
# Club ELECTROPUTERE – Parter



Nr. crt.	Suprafata (mp)
1	128,02
2	127,94
3	54,00
4	8,14
5	14,80
6	9,98
7	2,09
8	1,97
9	34,90
10	31,22
11	14,06
12	36,17
13	8,92
14	14,25
15	16,80
16	3,02
17	3,33
18	47,91
19	7,07
20	7,88
21	82,67
22	7,10
23	6,91
24	17,84
25	167,14
26	3,64
27	11,26
28	4,16
29	15,61
30	20,35

Suprafata utila  
(fara 7,9,20)

# Club ELECTROPUTERE – ETAJ



Nr. crt.	Suprafata (mp)
1	59,13
2	1,62
3	1,62
4	81,97
5	20,74
6	21,58
7	32,66
8	1,65
9	1,95
10	10,25
11	35,06
12	5,07
13	12,26
14	7,50
15	6,86
16	4,04
17	11,03
18	2,40
19	2,36
20	3,07
21	40,07
22	25,61
23	14,82
24	41,92
25	10,71
26	3,24
27	32,77
28	49,78
29	22,53
30	49,35
Suprafata utila 436,04 mp	